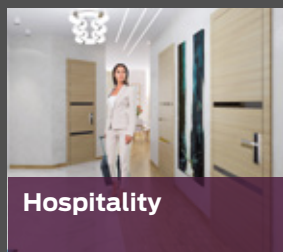




ASTRAL TeknoPRO CYLINDERS

Patented System



Astral Tekno Pro cylinders: security and control against forced entry.



- **Astral Tekno Pro** is the innovative evolution of **Astral Tekno**. Its strength lies in the cut on the cylinder body. In the event of attempted forced entry, the cylinder snaps in a controlled manner at a predetermined point, protecting the heart of the cylinder which remains inside the lock and therefore difficult to remove. If the cylinder snaps in this way, it is still possible to open the door from the outside with the keys.
- **Astral Tekno Pro** is also fitted with elements inside the cylinder which increase its drill resistance.
- **Astral Tekno Pro** keys are patented, ensuring greater protection against illegal reproduction.

Certifications

- **Astral Tekno Pro** In compliance with EN1303: 2015.
- **EPD (Environmental Product Declaration)** CISA is awarded EPDs for all its cylinders, including **Astral Tekno Pro**, on the basis of its ISO 14025 and EN 15804 environmental declarations. The EPDs meet the need to produce goods which protect our planet's resources and which have a lower environmental impact.



Ideal solutions
for the residential,
healthcare,
business
and commercial
sectors.



RESIDENTIAL

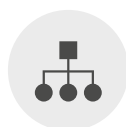


Greater
security.



Fewer
keys.

COMMERCIAL



Hierarchical
access.



Authorised
entry.

HEALTHCARE



Flexible, protected
key duplication.



Authorised
entry.

Residences:

Astral Tekno Pro guarantees **security**, thanks to its high attack resistance and protected key duplication, and **convenience**, as it offers the possibility of opening all accesses with just one key.

Hospitals and health centres:

Astral Tekno Pro allows you to **manage complex access systems** in large facilities with **master key systems**, assigning keys to staff and controlling all duplications for maximum **security**.

Commercial businesses and offices:

The **Astral Tekno Pro** system allows you to coordinate **master key systems** in **different areas and departments**. They become more accessible and you can control **authorisation and the number of keys in circulation** to protect access to environments containing sensitive data or valuables.

Protected key
duplication.
Secure cylinders.



Key

SECURITY

Key Related Security



- **PATENT NO. EP1867810B1**
- Patented key for greater **protection against illegal reproduction.**
- Security Card for authorised key duplication by CISA and CISA Tekno authorised centres.
- **10-pin key biting system on 2 rows.**
- Excellent **access management** potential e.g.: 63,000 different cylinders with one master key.
- Over **1,600,000 possible combinations** or different keys.
- Wide range of **personalised profiles.**

TECHNICAL FEATURES

- Flat reversible.
- In nickel-plated brass.
- Personalised profiles in nickel silver alloy.
- Ergonomic plastic key bow with personalised insert available in 5 colours.
- Key blade 16 mm long compatible with protective roses.
- Numerical code on key bow.
- Key thickness 2.9 mm.
- Depth 0.48 mm.

In compliance with EN 1303: 2015





Cylinder

SECURITY

Attack Resistance



- **Protection against pulling and tearing** thanks to the cut on the cylinder body and plug.



- **BKP PATENT PCT/WO 2007/074163A1** Protection against bumping, thanks to BKP patented technology (Bump Key Power).



- **Drill resistance** thanks to the key biting system in hardened steel.
- **High resistance to forced entry** using the wax impression technique, thanks to the special configuration of the springs.

TECHNICAL FEATURES

- 10-pin key biting system (6 active, 4 passive).
- Brass body.
- Brass plugs.
- Clutch-type DIN cam in self-lubricating sintered steel.
- Hardened steel pins.
- Variable shape hardened steel drivers.
- Double side control steel pin.
- Phosphor bronze and steel springs.
- 100,000 cycles (in compliance with EN 1303: 2015 Durability: 6).

Finishes

- Standard: nickel-plated brass (fin.12).
- On request: sanded brass (fin.66).

In compliance with EN 1303: 2015

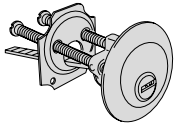
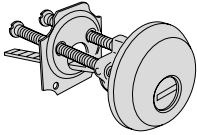
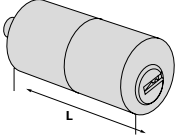
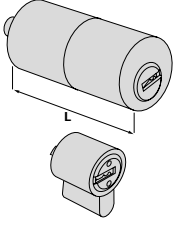
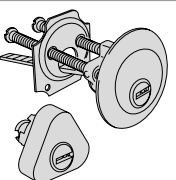
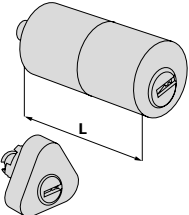
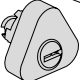
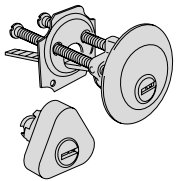
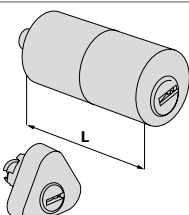
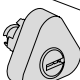


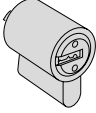
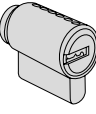
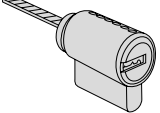
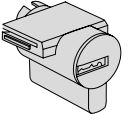
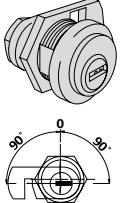
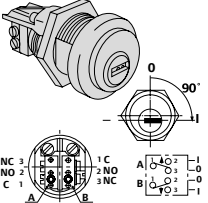
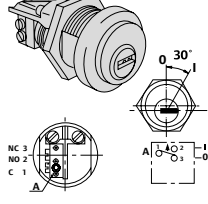
TYPE	DESCRIPTION	COMM. DIM.	W	A	B	PINS	KEY ITEM	kg		ITEM				
								UNIT WEIGHT	NO. PIECES	Type	Dim.	Hand	Fin.	
	<ul style="list-style-type: none"> Double cylinder with clutch system 	30/30	59	29.5	29.5	10	10069000000CL	0.235	1	1	OM3TI	07	0	12
		28/34	61	27.5	33.5	10	10069000000CL	0.234	1	1	OM3TI	06	0	12
		28/36	63	27.5	35.5	10	10069000000CL	0.240	1	1	OM3TI	09	0	12
		30/35	64	29.5	34.5	10	10069000000CL	0.243	1	1	OM3TI	26	0	12
		33/33	65	32.5	32.5	10	10069000000CL	0.258	1	1	OM3TI	10	0	12
		35/35	69	34.5	34.5	10	10069000000CL	0.272	1	1	OM3TI	13	0	12
		40/30	69	39.5	29.5	10	10069000000CL	0.272	1	1	OM3TI	12	0	12
		28/43	70	27.5	42.5	10	10069000000CL	0.262	1	1	OM3TI	11	0	12
		30/45	74	29.5	44.5	10	10069000000CL	0.274	1	1	OM3TI	27	0	12
		35/40	74	34.5	39.5	10	10069000000CL	0.274	1	1	OM3TI	28	0	12
		30/50	79	29.5	49.5	10	10069000000CL	0.301	1	1	OM3TI	17	0	12
		35/45	79	34.5	44.5	10	10069000000CL	0.289	1	1	OM3TI	19	0	12
		40/40	79	39.5	39.5	10	10069000000CL	0.289	1	1	OM3TI	18	0	12
		30/55	84	29.5	54.5	10	10069000000CL	0.304	1	1	OM3TI	33	0	12
		35/50	84	34.5	49.5	10	10069000000CL	0.360	1	1	OM3TI	31	0	12
		40/45	84	39.5	44.5	10	10069000000CL	0.360	1	1	OM3TI	30	0	12
		30/60	89	29.5	59.5	10	10069000000CL	0.308	1	1	OM3TI	20	0	12
		35/55	89	34.5	54.5	10	10069000000CL	0.320	1	1	OM3TI	32	0	12
		40/50	89	39.5	49.5	10	10069000000CL	0.332	1	1	OM3TI	21	0	12
		45/45	89	44.5	44.5	10	10069000000CL	0.320	1	1	OM3TI	29	0	12
		30/65	94	29.5	64.5	10	10069000000CL	0.333	1	1	OM3TI	41	0	12
		35/60	94	34.5	59.5	10	10069000000CL	0.334	1	1	OM3TI	38	0	12
		40/55	94	39.5	54.5	10	10069000000CL	0.390	1	1	OM3TI	42	0	12
		45/50	94	44.5	49.5	10	10069000000CL	0.355	1	1	OM3TI	39	0	12
		30/70	99	29.5	69.5	10	10069000000CL	0.334	1	1	OM3TI	24	0	12
		35/65	99	34.5	64.5	10	10069000000CL	0.349	1	1	OM3TI	22	0	12
		40/60	99	39.5	59.5	10	10069000000CL	0.349	1	1	OM3TI	25	0	12
		45/55	99	44.5	54.5	10	10069000000CL	0.349	1	1	OM3TI	43	0	12
		50/50	99	49.5	49.5	10	10069000000CL	0.349	1	1	OM3TI	23	0	12
		40/65	104	39.5	64.5	10	10069000000CL	0.349	1	1	OM3TI	44	0	12
		45/60	104	44.5	59.5	10	10069000000CL	0.378	1	1	OM3TI	54	0	12
		30/75	104	29.5	74.5	10	10069000000CL	0.400	1	1	OM3TI	56	0	12
		35/70	104	34.5	69.5	10	10069000000CL	0.402	1	1	OM3TI	49	0	12
		55/50	104	54.5	49.5	10	10069000000CL	0.378	1	1	OM3TI	64	0	12
		35/75	109	34.5	74.5	10	10069000000CL	0.378	1	1	OM3TI	57	0	12
		30/80	109	29.5	79.5	10	10069000000CL	0.420	1	1	OM3TI	37	0	12
		45/65	109	44.5	64.5	10	10069000000CL	0.378	1	1	OM3TI	45	0	12
		40/70	109	39.5	69.5	10	10069000000CL	0.410	1	1	OM3TI	35	0	12
		50/60	109	49.5	59.5	10	10069000000CL	0.410	1	1	OM3TI	36	0	12
		55/55	109	54.5	54.5	10	10069000000CL	0.410	1	1	OM3TI	70	0	12
30/85	114	29.5	84.5	10	10069000000CL	0.420	1	1	OM3TI	77	0	12		
50/65	114	49.5	64.5	10	10069000000CL	0.420	1	1	OM3TI	65	0	12		
55/60	114	54.5	59.5	10	10069000000CL	0.420	1	1	OM3TI	71	0	12		
40/75	114	39.5	74.5	10	10069000000CL	0.420	1	1	OM3TI	59	0	12		
45/70	114	44.5	69.5	10	10069000000CL	0.420	1	1	OM3TI	61	0	12		
30/90	119	29.5	89.5	10	10069000000CL	0.450	1	1	OM3TI	52	0	12		
40/80	119	39.5	79.5	10	10069000000CL	0.450	1	1	OM3TI	60	0	12		
60/60	119	59.5	59.5	10	10069000000CL	0.450	1	1	OM3TI	40	0	12		
50/70	119	49.5	69.5	10	10069000000CL	0.450	1	1	OM3TI	66	0	12		
30/100	129	29.5	99.5	10	10069000000CL	0.460	1	1	OM3TI	53	0	12		

TYPE	DESCRIPTION	COMM. DIM.	W	A	B	PINS	KEY ITEM	kg		ITEM				
								UNIT WEIGHT	NO. PIECES	Type	Dim.	Hand	Fin.	
	<ul style="list-style-type: none"> Single cylinder with 8-position adjustable cam 	30/10	39.0	29.5	9.5	10	10069000000CL	0.185	1	1	OM324	02	0	12
		35/10	44.0	34.5	9.5	10	10069000000CL	0.185	1	1	OM324	07	0	12
		40/10	49.0	39.5	9.5	10	10069000000CL	0.195	1	1	OM324	03	0	12
		45/10	54.0	44.5	9.5	10	10069000000CL	0.195	1	1	OM324	08	0	12
		50/10	59.0	49.5	9.5	10	10069000000CL	0.215	1	1	OM324	04	0	12
		55/10	64.0	54.5	9.5	10	10069000000CL	0.215	1	1	OM324	35	0	12
		60/10	69.0	59.5	9.5	10	10069000000CL	0.225	1	1	OM324	05	0	12
		65/10	74.0	64.5	9.5	10	10069000000CL	0.245	1	1	OM324	21	0	12
		70/10	79.0	69.5	9.5	10	10069000000CL	0.245	1	1	OM324	06	0	12
		80/10	89.0	79.5	9.5	10	10069000000CL	0.275	1	1	OM324	20	0	12
		95/10	104.0	94.5	9.5	10	10069000000CL	0.290	1	1	OM324	13	0	12

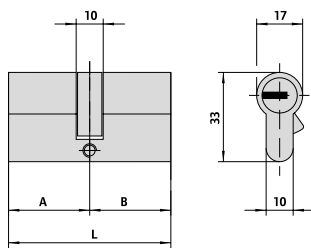
	<ul style="list-style-type: none"> Cylinder set pre-set for thumb turn installation On request: Thumbturns item 06353, 06355, 06356, 06357 	30/30	59	29.5	29.5	10	10069000000CL	0.244	1	1	OM3T2	07	0	12
		30/35	64	29.5	34.5	10	10069000000CL	0.264	1	1	OM3T2	26	0	12
		35/30	64	34.5	29.5	10	10069000000CL	0.259	1	1	OM3T2	81	0	12
		30/40	69	29.5	39.5	10	10069000000CL	0.267	1	1	OM3T2	82	0	12
		35/35	69	34.5	34.5	10	10069000000CL	0.279	1	1	OM3T2	13	0	12
		40/30	69	39.5	29.5	10	10069000000CL	0.279	1	1	OM3T2	12	0	12
		35/40	74	34.5	39.5	10	10069000000CL	0.279	1	1	OM3T2	28	0	12
		30/45	74	29.5	44.5	10	10069000000CL	0.294	1	1	OM3T2	27	0	12
		40/35	74	39.5	34.5	10	10069000000CL	0.294	1	1	OM3T2	83	0	12
		45/30	74	44.5	29.5	10	10069000000CL	0.294	1	1	OM3T2	91	0	12
		30/50	79	29.5	49.5	10	10069000000CL	0.294	1	1	OM3T2	17	0	12
		35/45	79	34.5	44.5	10	10069000000CL	0.318	1	1	OM3T2	19	0	12
		40/40	79	39.5	39.5	10	10069000000CL	0.309	1	1	OM3T2	18	0	12
		40/45	84	39.5	44.5	10	10069000000CL	0.309	1	1	OM3T2	30	0	12
		30/60	89	29.5	59.5	10	10069000000CL	0.309	1	1	OM3T2	20	0	12
		40/50	89	39.5	49.5	10	10069000000CL	0.324	1	1	OM3T2	21	0	12
		45/45	89	44.5	44.5	10	10069000000CL	0.324	1	1	OM3T2	29	0	12
		45/50	94	44.5	49.5	10	10069000000CL	0.324	1	1	OM3T2	39	0	12
		40/60	99	39.5	59.5	10	10069000000CL	0.326	1	1	OM3T2	25	0	12
		50/50	99	49.5	49.5	10	10069000000CL	0.353	1	1	OM3T2	23	0	12

	<ul style="list-style-type: none"> Cylinder set pre-set for thumb turn installation with adjustable shaft For use with inside escutcheon item 1.06458.20 On request: Thumbturns item 06353, 06355, 06356, 06357 	30/30	59	29.5	29.5	10	10069000000CL	0.284	1	1	OM3T7	07	0	12
		35/30	64	34.5	29.5	10	10069000000CL	0.294	1	1	OM3T7	81	0	12
		40/30	69	39.5	29.5	10	10069000000CL	0.312	1	1	OM3T7	12	0	12
		45/30	74	44.5	29.5	10	10069000000CL	0.320	1	1	OM3T7	91	0	12
		50/30	79	49.5	29.5	10	10069000000CL	0.329	1	1	OM3T7	90	0	12
		55/30	84	54.5	29.5	10	10069000000CL	0.345	1	1	OM3T7	92	0	12
		60/30	89	59.5	29.5	10	10069000000CL	0.359	1	1	OM3T7	87	0	12
		65/30	94	64.5	29.5	10	10069000000CL	0.359	1	1	OM3T7	A3	0	12
		70/30	99	69.5	29.5	10	10069000000CL	0.370	1	1	OM3T7	88	0	12
		80/30	109	79.5	29.5	10	10069000000CL	0.359	1	1	OM3T7	93	0	12
		90/30	119	89.5	29.5	10	10069000000CL	0.392	1	1	OM3T7	C6	0	12
		100/30	129	99.5	29.5	10	10069000000CL	0.398	1	1	OM3T7	C7	0	12

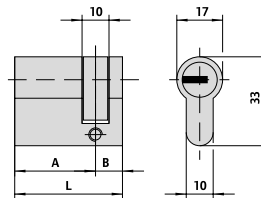
TYPE	DESCRIPTION	FOR LOCKS SERIES	W	PINS	KEY ITEM	kg		ITEM					
						UNIT WEIGHT	NO. PIECES	Type	Dim.	Hand	Fin.	Pers.	Spec.
	<ul style="list-style-type: none"> Cylinder 	1A610, 11540, 11610, 11615, 50010, 50110, 50115, 50130, 50180, 50330, 54310, 50312, 54315, 54340, 54342, 54350, 54352, 54510, 54512, 54550, 54552, 54570, 54572	10	10	100690000CL	0.204	1	1	OM510	00	0	12	CL
	<ul style="list-style-type: none"> Cylinder with nickel-plated anti-pulling and drill resistant protective rose 		10	10	100690000CL	0.325	1	1	OM510	10	0	12	CL
	<ul style="list-style-type: none"> Tubular cylinder 	1A611, 11611, 50111, 50116, 50131, 50181, 50411, 50481, 50511, 50581, 54316, 54341	50.0	10	100690000CL	0.215	1	1	OM210	50	0	12	CL
	<ul style="list-style-type: none"> Pair of cylinders with external tubular cylinder 	1A631, 1A721, 1A731	55.0	10	100690000CL	0.295	1	1	OM150	00	0	12	CL
	<ul style="list-style-type: none"> Cylinder set 	50120, 50125, 50160, 50170	10	10	100690000CL	0.267	1	1	OM112	00	0	12	CL
	<ul style="list-style-type: none"> Cylinder set with external tubular cylinder 	50121, 50126, 50141, 50161, 50171, 50421, 50461, 50471, 50521, 50561, 50571	10	10	100690000CL	0.295	1	1	OM116	00	0	12	CL
		11551, 11631, 11731, 11736, 11931, 11936	10	10	100690000CL	0.295	1	1	OM120	00	0	12	CL
	<ul style="list-style-type: none"> Pair of cylinders with external tubular cylinder 	11660, 11670	10	10	100690000CL	0.295	1	1	OM156	00	0	12	CL
	<ul style="list-style-type: none"> Cylinder set with external tubular cylinder 	11521, 11721, 11726, 11921, 11926	50.0	10	100690000CL	0.295	1	1	OM149	00	0	12	CL
		11661, 11671, 11761, 11771	55.0	10	100690000CL	0.253	1	1	OM155	00	0	12	CL

TYPE	DESCRIPTION	DOOR THICKNESS	PINS	KEY ITEM	ITEM		ITEM					
					UNIT WEIGHT	NO. PIECES	Type	Dim.	Hand	Fin.	Pers.	Spec.
	<ul style="list-style-type: none"> Steel padlock plug 2 keys Pickled brass body Complete with plate item 1.07573.08.0	10		100690000CL	0.117	1	1	OM610	00	0	00	CL
	<ul style="list-style-type: none"> Cylinder for outside access device 1.07078.28.0	10		100690000CL	0.117	1	1	OM610	10	0	12	CL
	<ul style="list-style-type: none"> Cylinder for outside access device 1.07078.29.0	10		100690000CL	0.117	1	1	OM610	11	0	12	CL
	<ul style="list-style-type: none"> Cylinder for Meroni "premiapri" knob-sets 	10		100690000CL	0.117	1	1	OM610	12	0	12	CL
	<ul style="list-style-type: none"> Key extraction to position (0) Ring item 1.06021.10.0 Deadbolt item 1.06414.20.0 or 1.06414.30.0 (to be ordered separately) 	19	10	100690000CL	0.117	1	1	OM410	00	0	12	CL
	<ul style="list-style-type: none"> Microswitch (7 A, 250 V) with welding terminals Automatic return to key extraction position (0) Ring item 1.06021.10.0 	19	10	100690000CL	0.117	1	1	OM415	01	0	12	CL
	<ul style="list-style-type: none"> Microswitch (7 A, 250 V) with welding terminals Automatic return to key extraction position (0) Ring item 1.06021.10.0 	19	10	100690000CL	0.117	1	1	OM415	03	0	12	CL

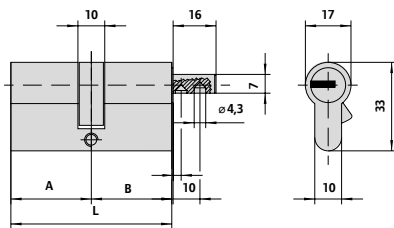
Drawings and dimensions.



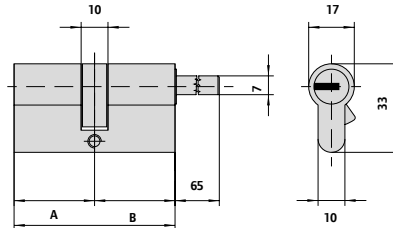
OM3T1



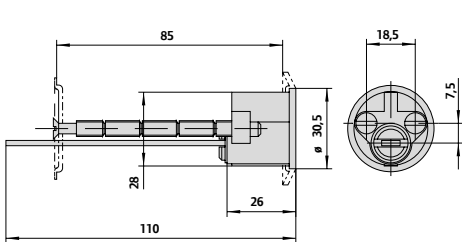
OM324



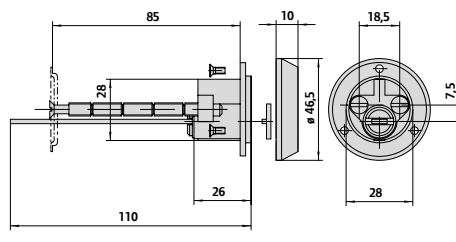
OM3T2



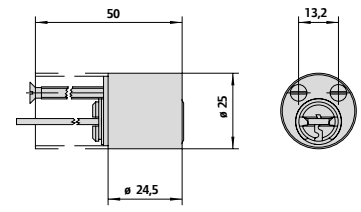
OM3T7



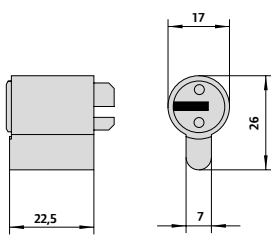
OM510



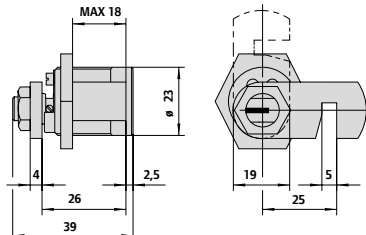
1.OM510.10.0



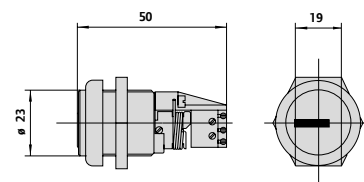
OM210



OM610



OM410



OM415

Specifications.

ASTRAL TEKNO PRO CYLINDERS

- Controlled duplication system: reversible key protected by patent and can only be duplicated at CISA Tekno Centres or CISA.
- Protection against pulling and tearing thanks to the cut on the cylinder body and plug.
- Protection against bumping, thanks to BKP patented technology (Bump Key Power)
- Drill resistance thanks to the key biting system in hardened steel.

Standards

- **Astral Tekno Pro:** in compliance with EN 1303:2015

Key Related Security: 6
Attack Resistance: C
Durability: 6

TECHNICAL FEATURES

Cylinder:

10-pin key biting system (6 active, 4 passive).

- Brass body.
- Brass plugs.
- Clutch-type DIN cam in self-lubricating sintered steel.
- Hardened steel pins.
- Variable shape hardened steel drivers.
- Double side control steel pin.
- Phosphor bronze and steel springs.

Key:

- Flat reversible.
- In nickel-plated brass.
- Silver nickel alloy.
- Ergonomic plastic key bow with personalised insert available in 5 colours.
- Key blade 16 mm long compatible with protective roses.
- Numerical code on key bow.

Supplied as standard

- 3 keys
- Security Card
- Fixing screw

Finishes

- Standard: nickel-plated brass
- On request: polished brass

Patents and EPD

(Environmental Product Declaration)

- BKP device: Patent no. PCT/WO/2007/074163A1.
- Key protected by patent no. EP1867810B1
- CISA is awarded EPDs for all its products in their respective categories on the basis of its ISO 14025 and EN 15804 environmental declarations. The EPD certificates are verified and registered documents which communicate transparent and comparable information about the life cycle environmental impact of a product.

These certificates meet the need to produce goods which protect our planet's resources and which have a lower environmental impact. Manufacturers of locks, hardware, handles and other accessories were quick to come on board and endorse this European project. There are currently 14 categories of EPDs, the ones relevant to CISA products and solutions are:

- Door and window handles
- Door closers (including Door coordinators)
- Locks
- Locking cylinders
- Padlocks
- Panic exit devices

About Allegion™

Allegion (NYSE: ALLE) is a global pioneer in safety and security, with leading brands like CISA®, Interflex®, LCN®, Schlage®, SimonsVoss® and Von Duprin®. Focusing on security around the door and adjacent areas, Allegion produces a range of solutions for homes, businesses, schools and other institutions. Allegion is a \$2 billion company, with products sold in almost 130 countries.

For more visit allegion.com

